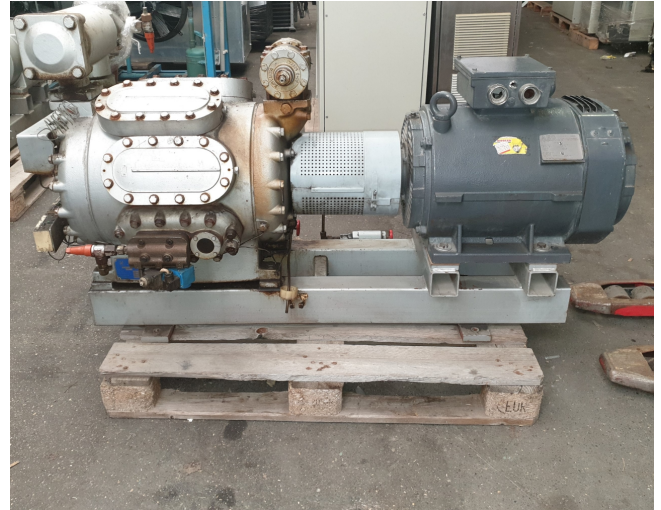


Sabroe CMO 28

Specifications

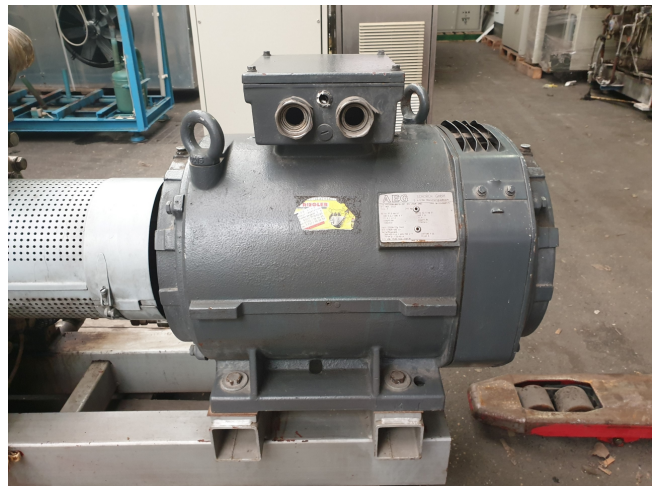
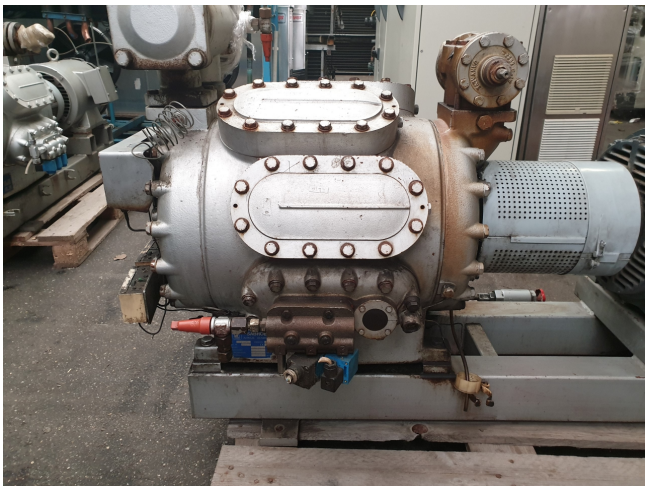
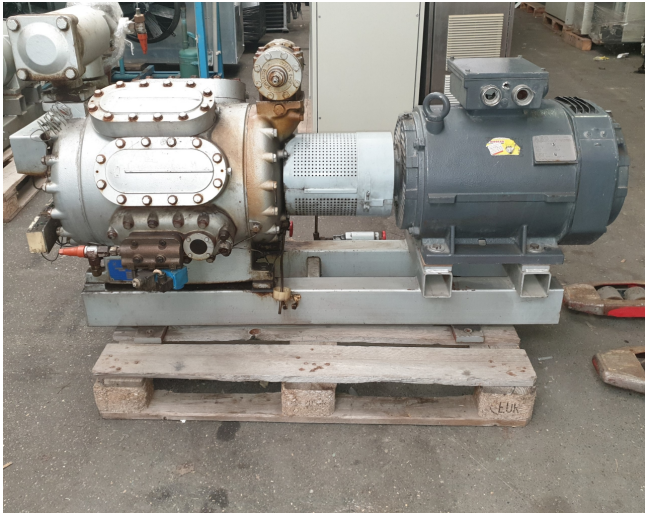
Marque	Sabroe
Le type	CMO 28
Réfrigérant	NH 3 / Freon
Refrigerant type	R22 or other types
kW at +10°C/+40°C	233
kW at 0°C/+40°C	152
kW at -5°C/+40°C	120
kW at -10°C/+40°C	93
kW at -20°C/+40°C	52
kW at -30°C/+40°C	25
Électromoteur Specs	37kW at 1460RPM
Sur le châssis en acier	✓
Interrupteurs de sécurité	✓
de pression	
Manomètres	✓
Système de niveau	✓
d'huile	
Remarques	capacity based on NH3
Remarques	R22 or other freon types
Tailles	1680x750x920 mm (LxWxH)
Stock	1



Description

Used Sabroe CMO 28

Used Sabroe CMO 28 single-stage reciprocating compressor with electro motor build by AEG with 37kW and 1460RPM at 50 *Why choose for HOSBV? Were not only the largest used refrigeration specialist in Europe, but also, we deliver all equipment including an extensive test, warranty and industrial cleaning. *Optional we can also arrange the logistics.





Model	Number of cylinders	Swept volume at 1500 rpm m³/h	Nominal capacities in kW at 1500 rpm				Dimensions in mm Direct coupled unit			Weight excluding motor kg	Sound pressure level at 1500 rpm (dB(A))	
			R123		Booster	R404A		L	W			H
			Single/high stage	Single/high stage		Single/high stage	Single/high stage					
CMO 24	4	97	156	53	85	54	54	1400-2150	800	900	480	69
CMO 26	6	146	175	79	127	21	127	1450-2175	800	900	520	71
CMO 28	8	194	233	105	170	28	105	1475-2200	800	900	550	72
CMO 34	4	113	136	62	100	17	99	1400-2150	800	900	480	70
CMO 36	6	170	204	93	149	25	149	1450-2175	800	900	520	72
CMO 38	8	228	273	123	199	33	198	1475-2200	800	900	550	73

Nominal capacities are based on 1500 rpm and 5K liquid subcooling.
All refrigerants make it possible to operate CMO compressors

01/2015